



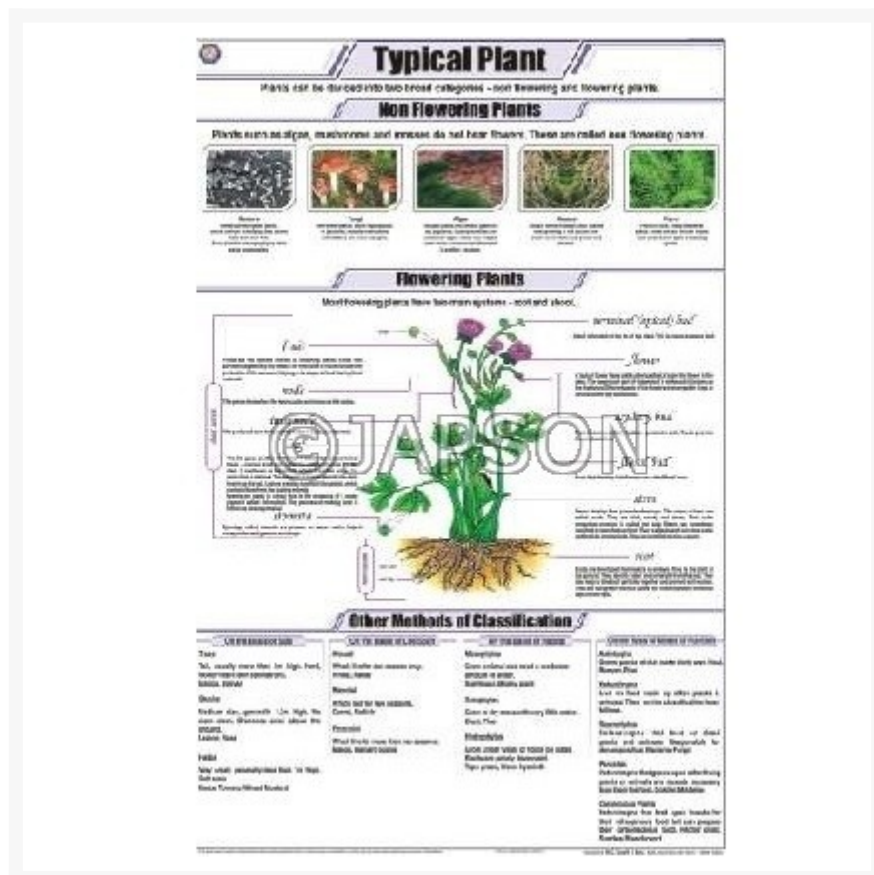
Address:
JAMBU PERSHAD & SONS
6275/22 Nicholson Road,
Ambala Cantt, Haryana,
INDIA
Pin: 133001

Email:
sales@japson.com
japsonambala@yahoo.com

Website:
www.japson.com
Phone:
+91-171-4006897

Plant Charts, Botany, School Education

Product Image



Description

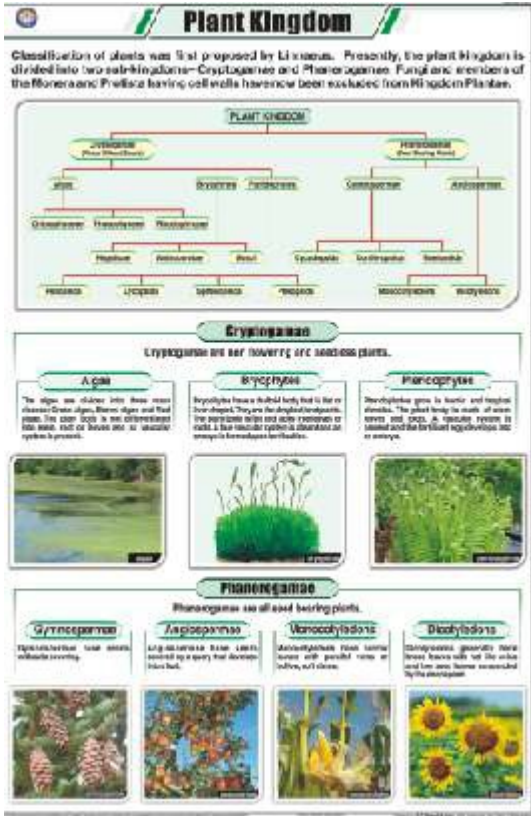
Standard Size : 58x90cms

Language : English

Laminated Paper Charts with Plastic Rollers. These Charts have technically accurate and detailed description in vivid colours.

Note: Based on minimum order quantity conditions, Charts can be customized to your requirements in terms of CONTENT, LANGUAGE, SIZE, etc. Please write back to us for discussion.

A. Charts, Plant Kingdom

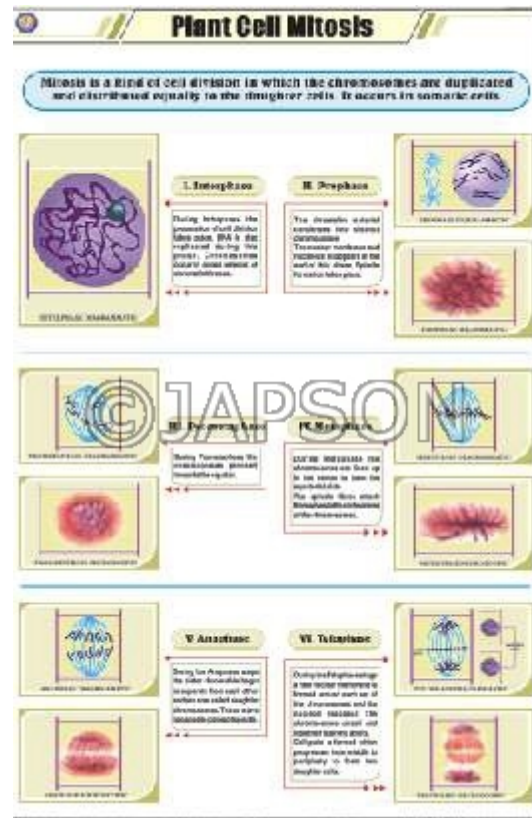


B. Charts, Typical Plant



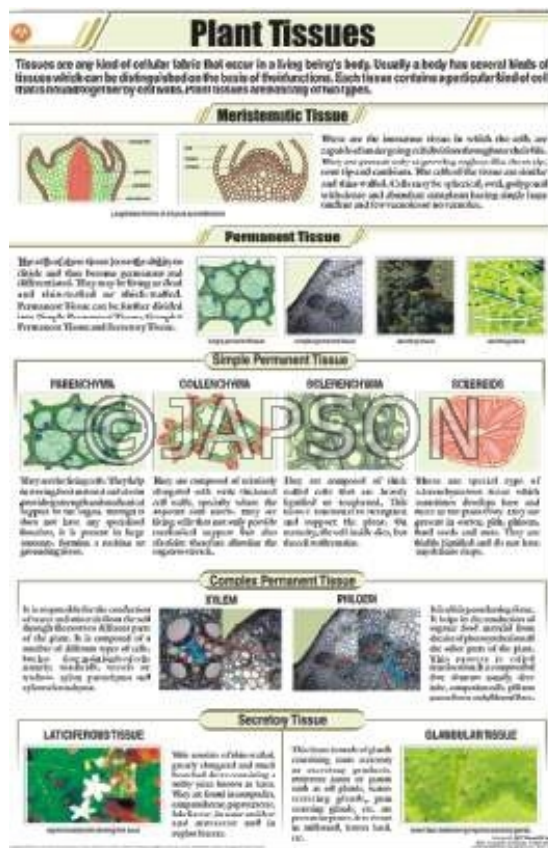
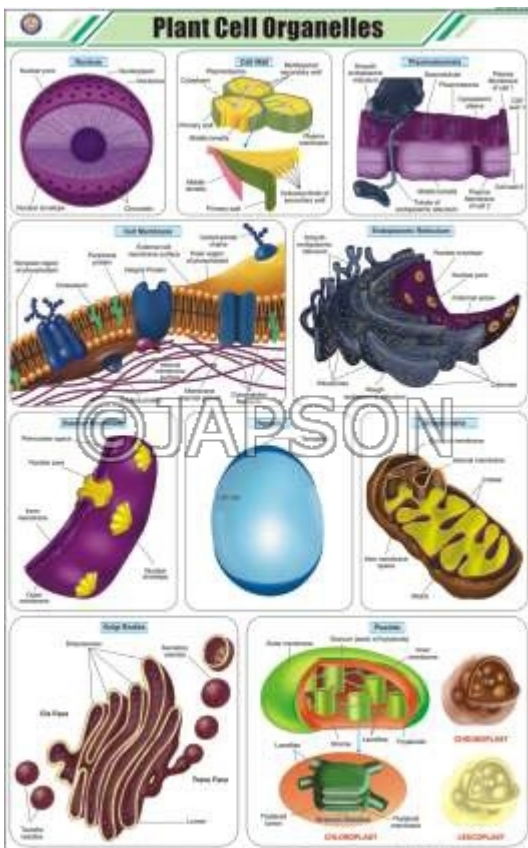
C. Charts, Typical Plant Cell

D. Charts, Plant Mitosis



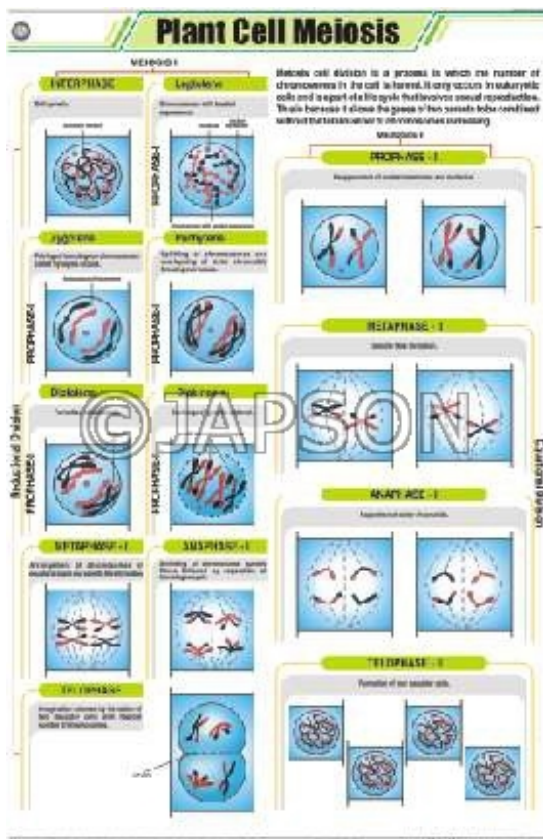
E. Charts, Plant Cell Organelles

F. Charts, Plant Tissues



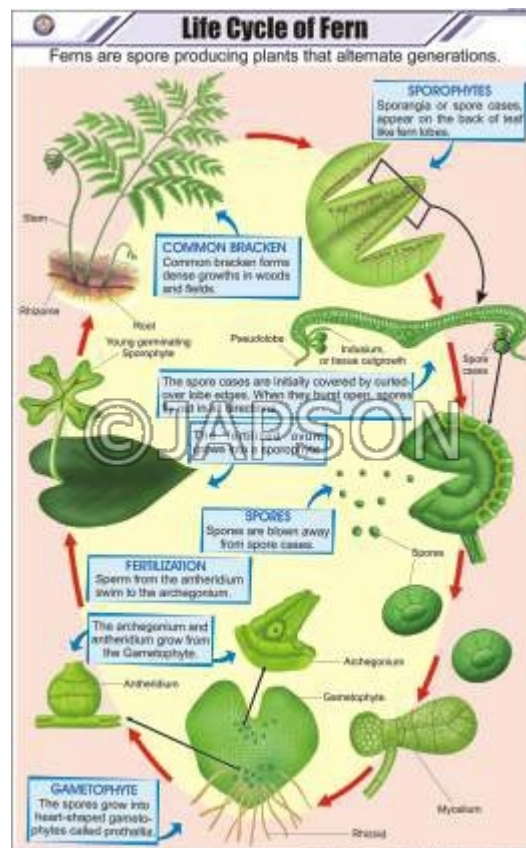
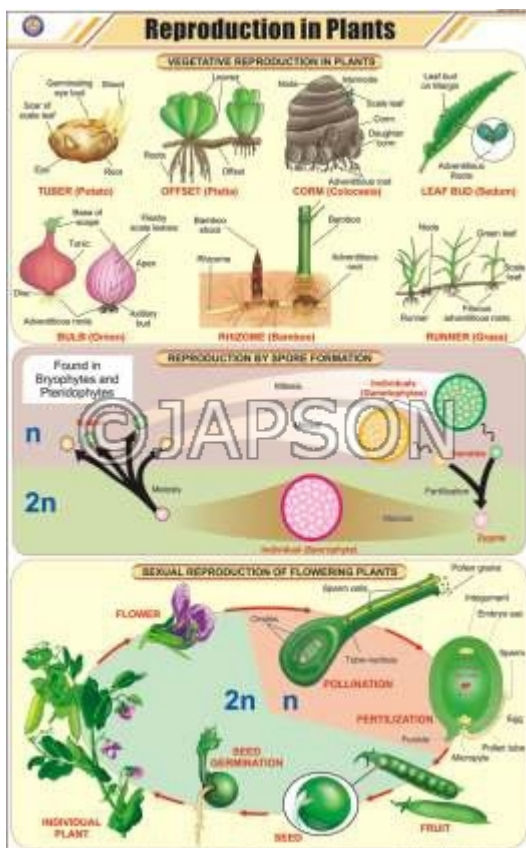
G. Charts, Plant Cell Meiosis

H. Charts, Plant Diseases



I. Charts, Reproduction in Plants

J. Charts, Life Cycle of Fern



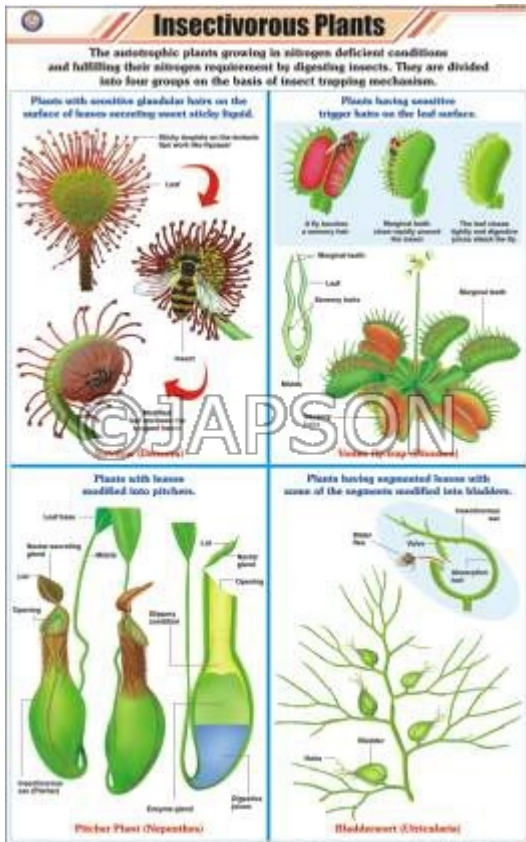
K. Charts, Parasitic Plants

L. Charts, Life Cycle of Moss



M. Charts, Hydrophytes

N. Charts, Insectivorous Plants



O. Charts, Xerophytes

P. Charts, Mesophytes

Xerophytes

Xerophytes occur in regions where the amount of water in the soil is very less.

External Features of Xerophytes

1. The root system is well developed, probably branched and extremely spread.
2. The roots reach to a great depth.
3. The leaves are generally small and succulent.
4. The leaves are covered with a thick cuticle.
5. There may also be fleshy and green succulent stems.
6. Some plants have modified stems, for example, in Opuntia stem forms a leaf-like structure called phylloclad. In Asparagus and Phorbia the leaf-like structure formed by the leaf is called cladode.
7. Leaves are often hard in Sarcocolla.
8. Leaves are covered with thick cuticle in Mesophytes.
9. Leaves are smaller in size and reduced in Mesophytes.
10. Leaves are reduced to spines in Mesophytes.



Opuntia Sarcocolla

(Succulent stems with small leaves) (Succulent stems with small leaves)

Examples: Opuntia, Sarcocolla, Euphorbia, etc.

Anatomical Characters of Xerophytes

1. Reduction in the rate of transpiration.
2. Presence of tissues which can store more water.
3. Presence of thick cuticle on leaf and stem epidermis.
4. Reduced stomatal frequency.
5. Thick cuticle on stem.
6. A thick envelope of hairs on epidermis and around nodules.
7. Intercellular spaces are very few and also very small.
8. Thickened tissues like collenchyma and sclerenchyma are well developed.
9. Vascular tissues are present in large amounts.



Opuntia Sarcocolla

(Succulent stems with small leaves) (Succulent stems with small leaves)

Examples: Opuntia, Sarcocolla, Euphorbia, etc.

Mesophytes

GENERAL DESCRIPTION

1. Mesophytes are the plants that grow under moderate conditions of temperature and moisture.
2. The soil in which they grow is neither too dry nor too wet.
3. The transpiration of the plant is moderate.
4. Mesophytes are, therefore, intermediate between hydrophytes and xerophytes.

EXTERNAL FEATURES

1. The root system is well developed.
2. The leaves are generally small and succulent.
3. The stem is solid, erect and normally branched.
4. There are stem and shoot nodes.

ANATOMICAL CHARACTERS

1. Mesophytes are intermediate between xerophytes and hydrophytes.
2. Leaves are small and succulent.
3. The leaves are covered with a thick cuticle.
4. The leaves are covered with a thick cuticle.
5. The leaves are covered with a thick cuticle.
6. The leaves are covered with a thick cuticle.
7. The leaves are covered with a thick cuticle.
8. The leaves are covered with a thick cuticle.
9. The leaves are covered with a thick cuticle.
10. The leaves are covered with a thick cuticle.



Banyan Chrysanthemum

GENERAL DESCRIPTION

1. Mesophytes are the plants that grow under moderate conditions of temperature and moisture.
2. The soil in which they grow is neither too dry nor too wet.
3. The transpiration of the plant is moderate.
4. Mesophytes are, therefore, intermediate between hydrophytes and xerophytes.

EXTERNAL FEATURES

1. The root system is well developed.
2. The leaves are generally small and succulent.
3. The stem is solid, erect and normally branched.
4. There are stem and shoot nodes.

ANATOMICAL CHARACTERS

1. Mesophytes are intermediate between xerophytes and hydrophytes.
2. Leaves are small and succulent.
3. The leaves are covered with a thick cuticle.
4. The leaves are covered with a thick cuticle.
5. The leaves are covered with a thick cuticle.
6. The leaves are covered with a thick cuticle.
7. The leaves are covered with a thick cuticle.
8. The leaves are covered with a thick cuticle.
9. The leaves are covered with a thick cuticle.
10. The leaves are covered with a thick cuticle.



Pea Mango

Disclaimer

The Products details given on this page are indicative in nature and JAPSON reserves the right to change them without prior notice. Buyer is also requested to re-check the specifications and other features of product at the time of order as product development is a continuous process and minor modifications may be made to design based on latest availability, process and design.