



**Address:**  
**JAMBU PERSHAD & SONS**  
6275/22 Nicholson Road,  
Ambala Cantt, Haryana,  
INDIA  
Pin: 133001

**Email:**  
sales@japson.com  
japsonambala@yahoo.com

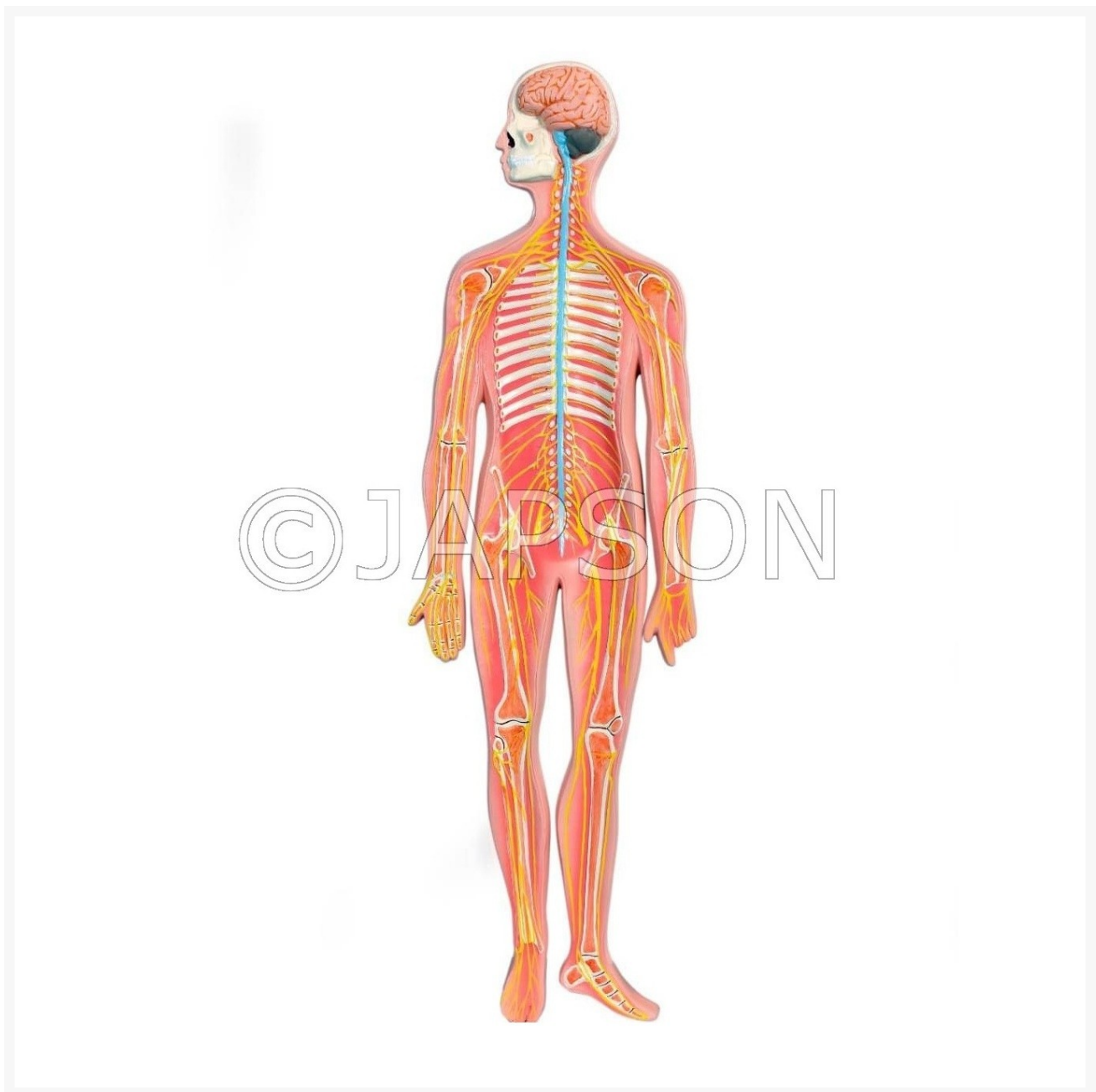
**Website:**  
www.japson.com  
**Phone:**  
+91-171-4006897

---

# Model, Human Nervous System

## Product Image

---



## Description

---

### Design Specifications:

1. One-half life-size, colored, relief model made of non-toxic plastic material.
2. The model shows the structure of the nervous system (brain, cerebrum, cerebellum, spinal cord, radial nerve, ulnar nerve, median nerve, lumbar plexus, femoral nerve, sacral plexus, sciatic nerve, brachial plexus, intercostal nerve, common peroneal nerve, tibial nerve, saphenous nerve, finger nerve and toe nerve).
3. The pathway of the main nerves is well illustrated in relation to the skeleton.
4. Mounted on a stable baseboard.
5. Dimensions (min.): 81cm H x 30cm L x 6 cm W

-  
Model, Human Nervous System

**Catalog No.** DEPD006

## Disclaimer

---

The Products details given on this page are indicative in nature and JAPSON reserves the right to change them without prior notice. Buyer is also requested to re-check the specifications and other features of product at the time of order as product development is a continuous process and minor modifications may be made to design based on latest availability, process and design.