



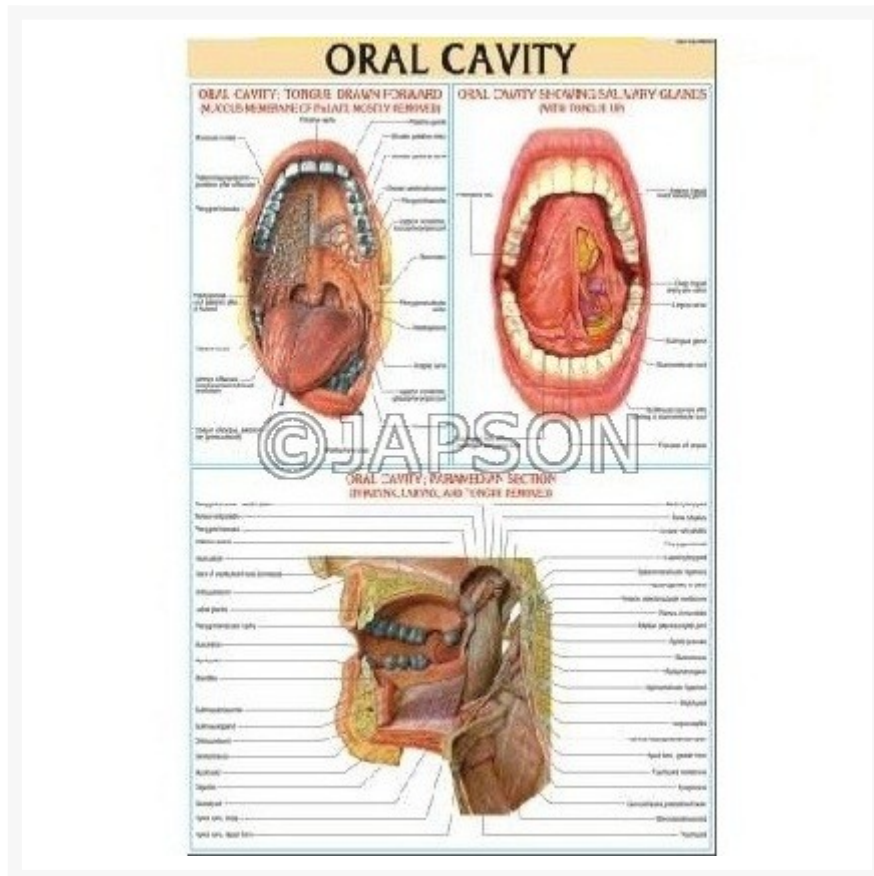
Address:
JAMBU PERSHAD & SONS
6275/22 Nicholson Road,
Ambala Cantt, Haryana,
INDIA
Pin: 133001

Email:
sales@japson.com
japsonambala@yahoo.com

Website:
www.japson.com
Phone:
+91-171-4006897

Medical (Nursing) Charts-II, School Education

Product Image



Description

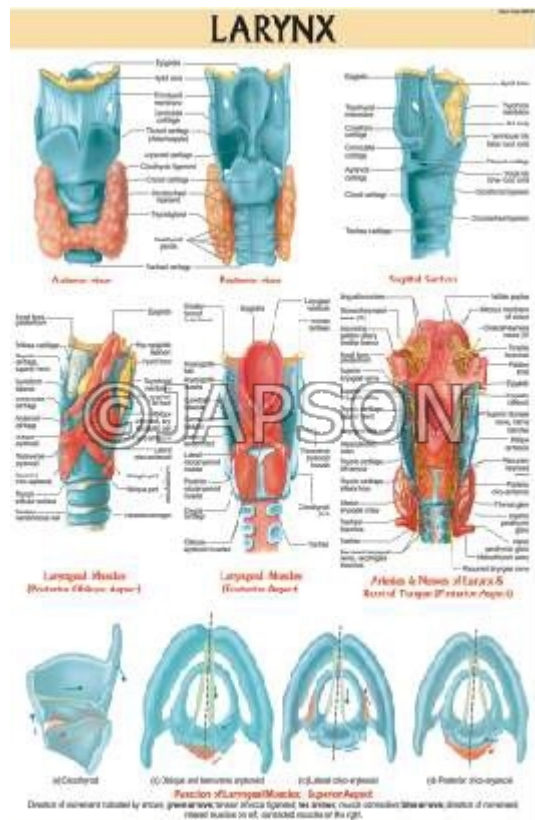
Standard Size: 51x66cms

Language: English

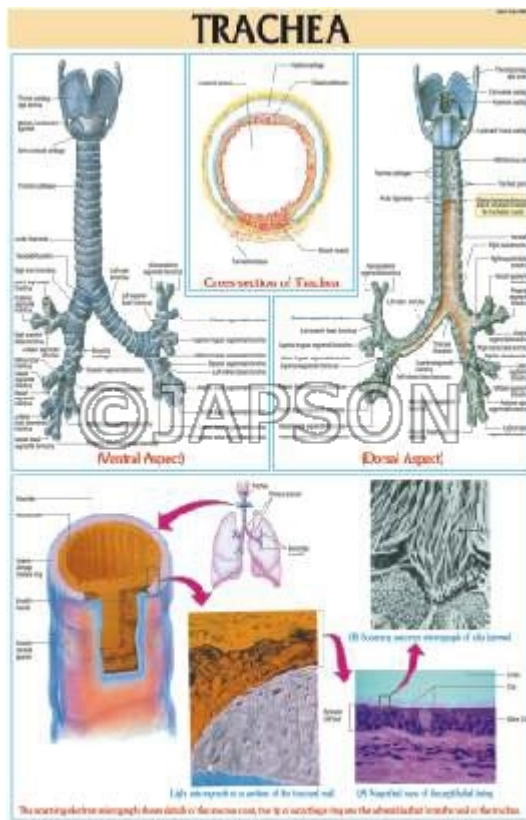
Laminated, Rigid and Flexible Charts with Plastic Rollers. These Charts have technically accurate and detailed description in vivid colours.

Note: Based on minimum order quantity conditions, Charts can be customized to your requirements in terms of CONTENT, LANGUAGE, SIZE, etc. Please write back to us for discussion.

A. Charts, Larynx

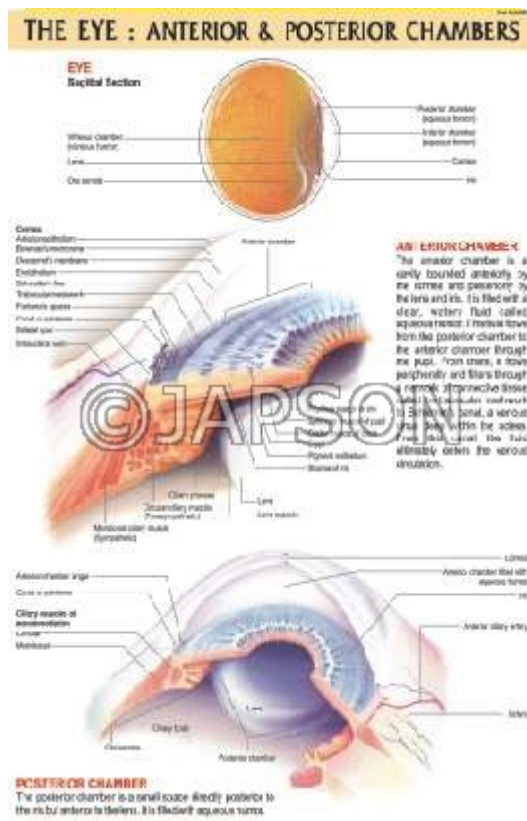
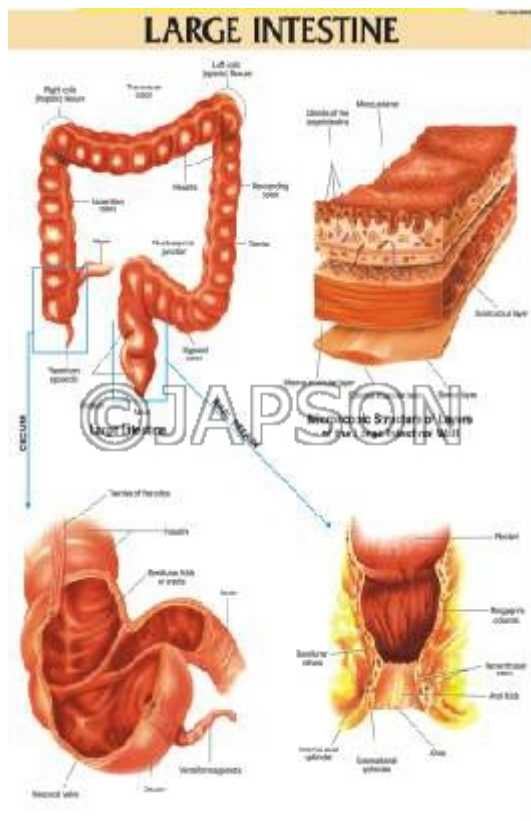


B. Charts, Trachea



C. Charts, Large Intestine

D. Charts, The Eye: Anterior & Posterior Chambers



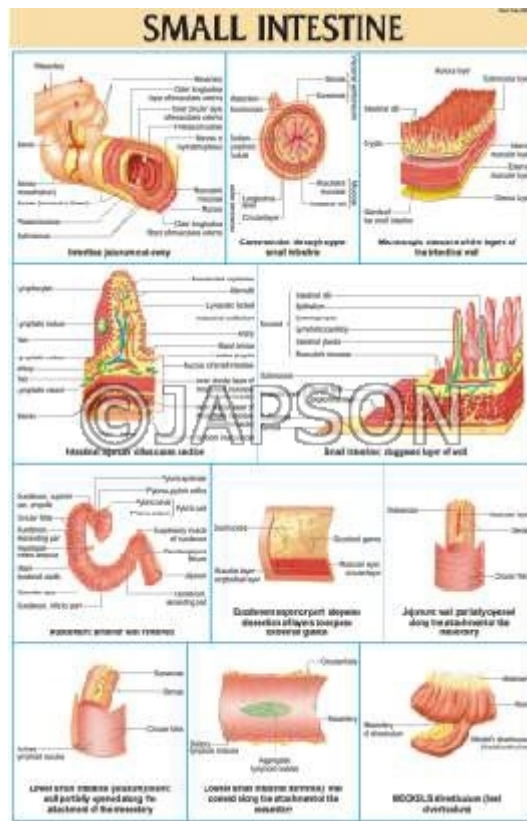
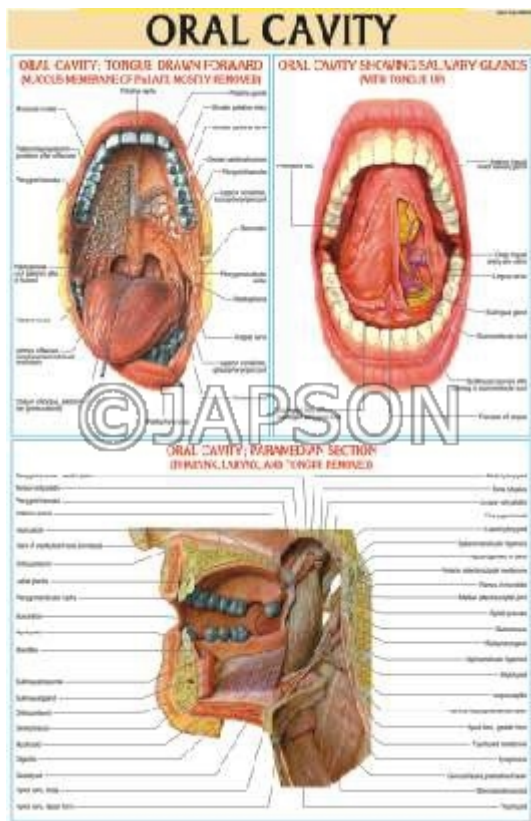
E. Charts, CPR Child

F. Charts, Blood Circulatory System



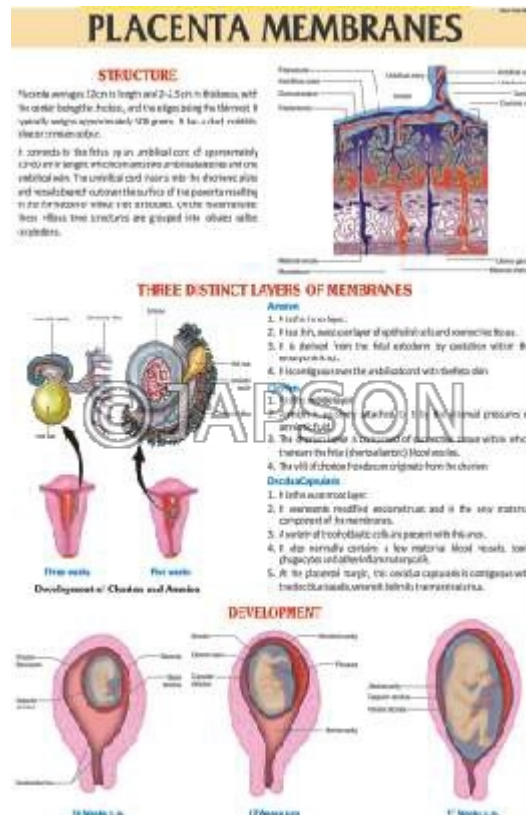
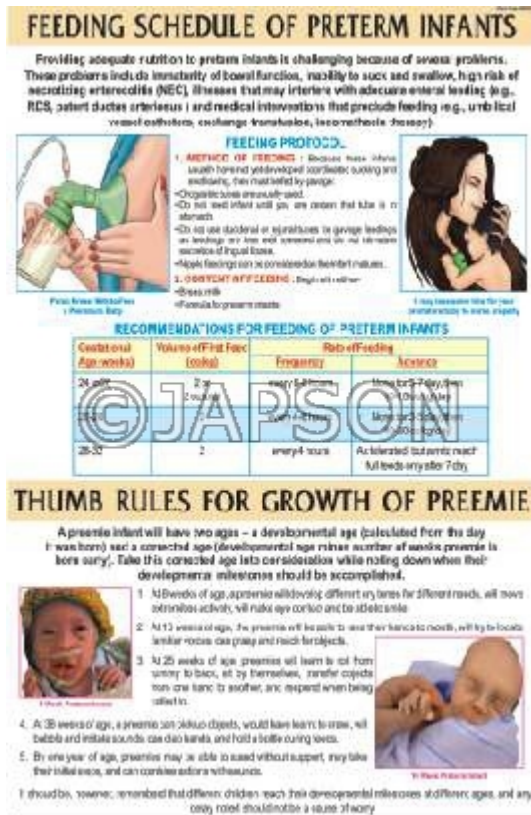
G. Charts, Oral Cavity

H. Charts, Small Intestine



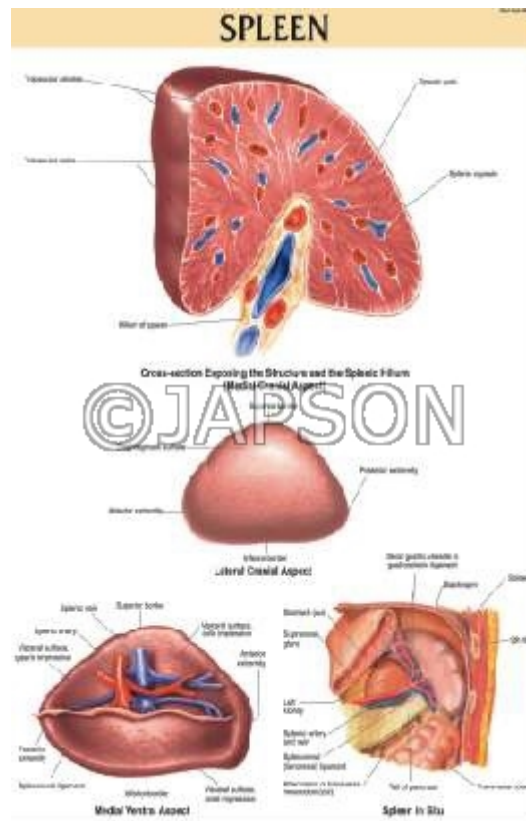
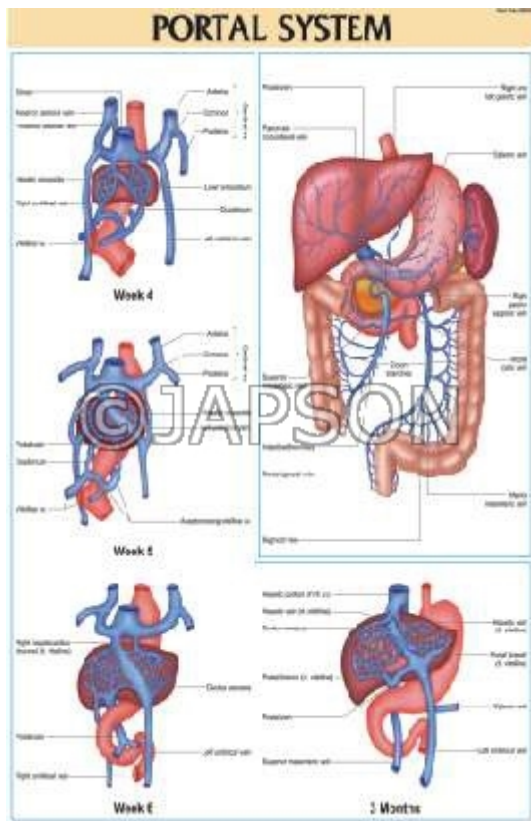
I. Charts, Feeding Schedule of Preterm Infants

J. Charts, Placenta Membranes



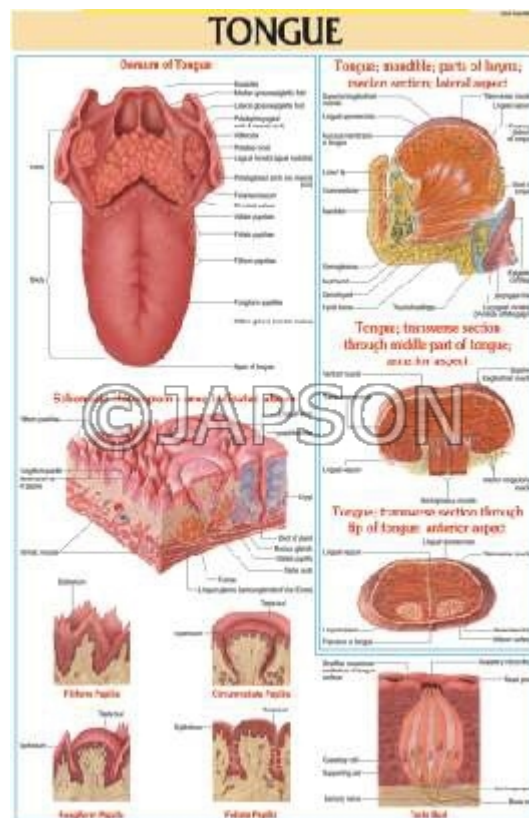
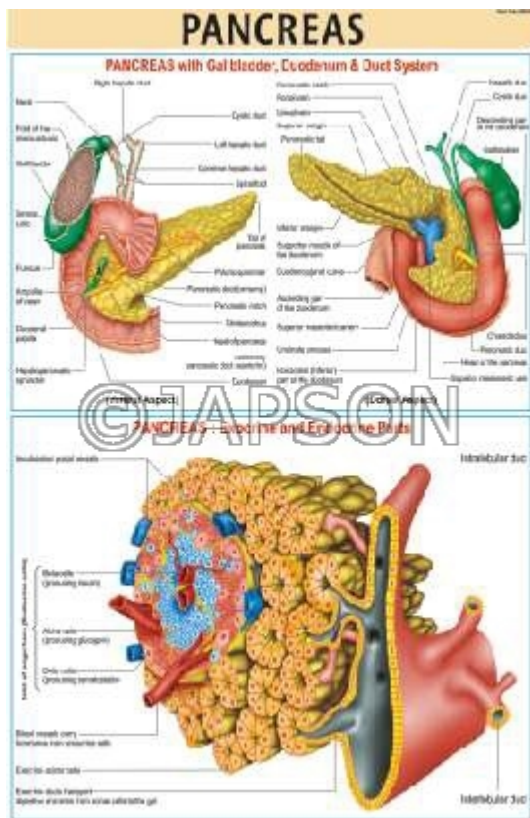
K. Charts, Portal System

L. Charts, Spleen



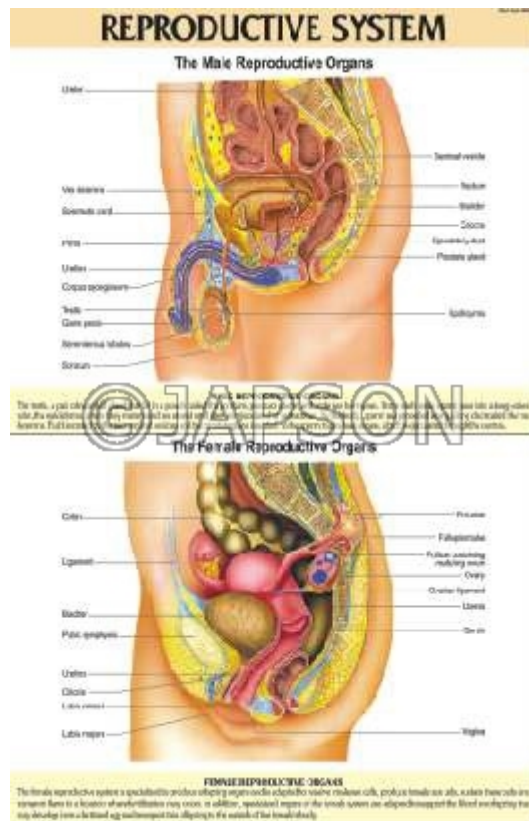
M. Charts, Pancreas

N. Charts, Tongue

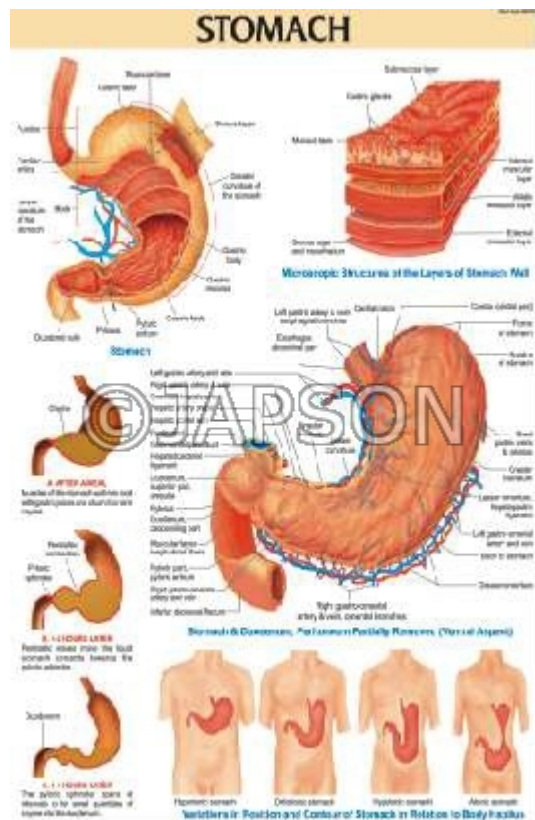


O. Charts, CPR Infant

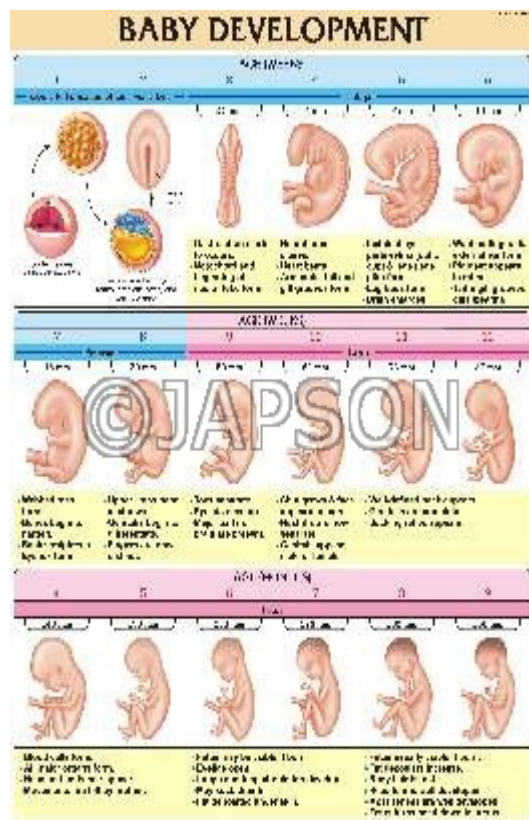
P. Charts, Reproductive System



Q. Charts, Stomach



R. Charts, Baby Development



Disclaimer

The Products details given on this page are indicative in nature and JAPSON reserves the right to change them without prior notice. Buyer is also requested to re-check the specifications and other features of product at the time of order as product development is a continuous process and minor modifications may be made to design based on latest availability, process and design.