



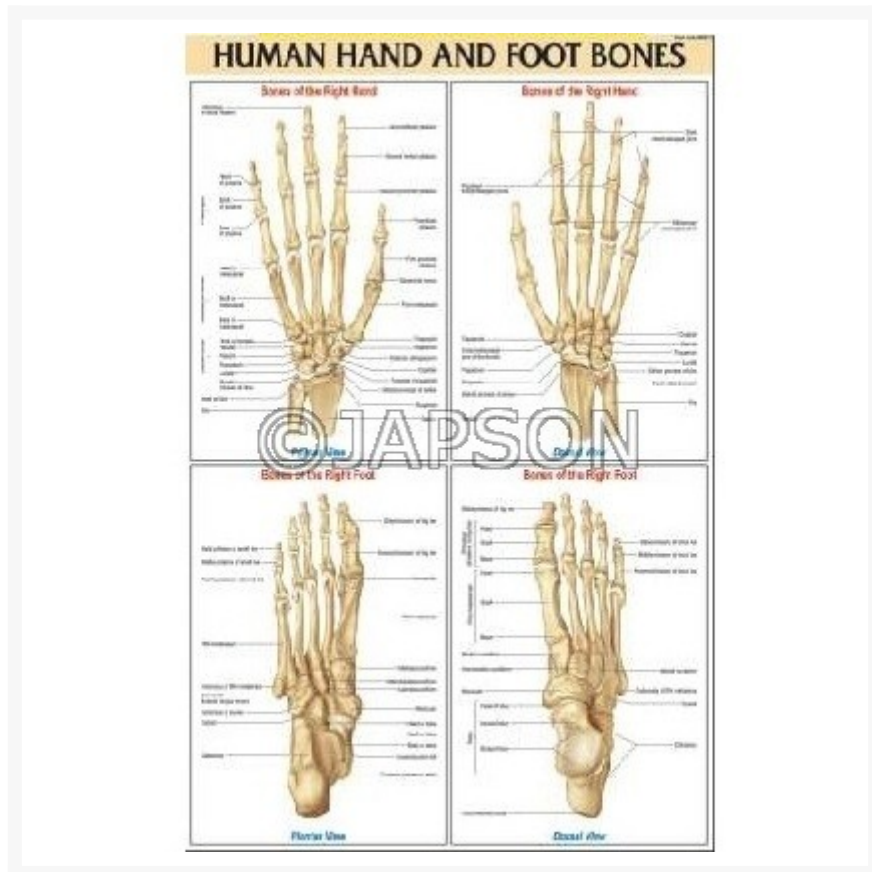
Address:
JAMBU PERSHAD & SONS
6275/22 Nicholson Road,
Ambala Cantt, Haryana,
INDIA
Pin: 133001

Email:
sales@japson.com
japsonambala@yahoo.com

Website:
www.japson.com
Phone:
+91-171-4006897

Medical (Nursing) Charts-I, School Education

Product Image



Description

Standard Size: 51x66cms

Language: English

Laminated, Rigid and Flexible Charts with Plastic Rollers. These Charts have technically accurate and detailed description in vivid colours.

Note: Based on minimum order quantity conditions, Charts can be customized to your requirements in terms of CONTENT, LANGUAGE, SIZE, etc. Please write back to us for discussion.

A. Charts, Different Types of Vertebra, Atlas

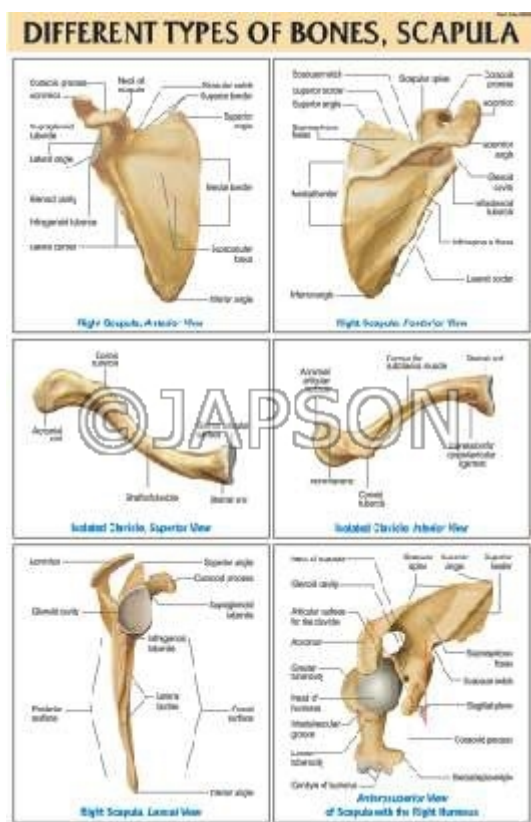


B. Charts, Different Type of Vertebra, Axis



C. Charts, Different Types of Bones, Scapula

D. Charts, Different Types of Joints



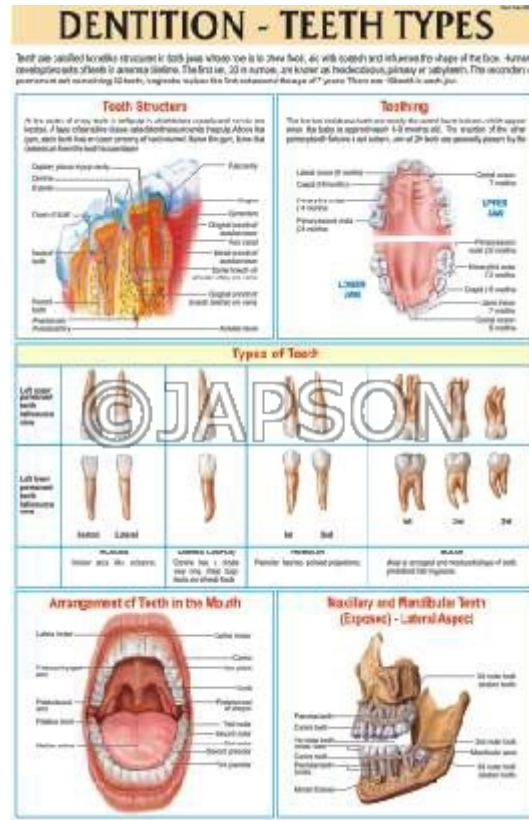
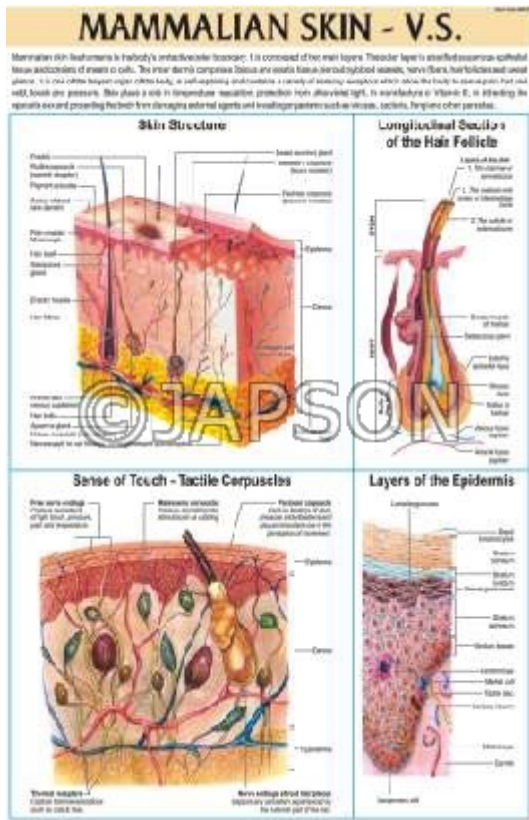
E. Charts, Human Hand And Foot Bones

F. Charts, Different Types of Vertebra, Lumbar



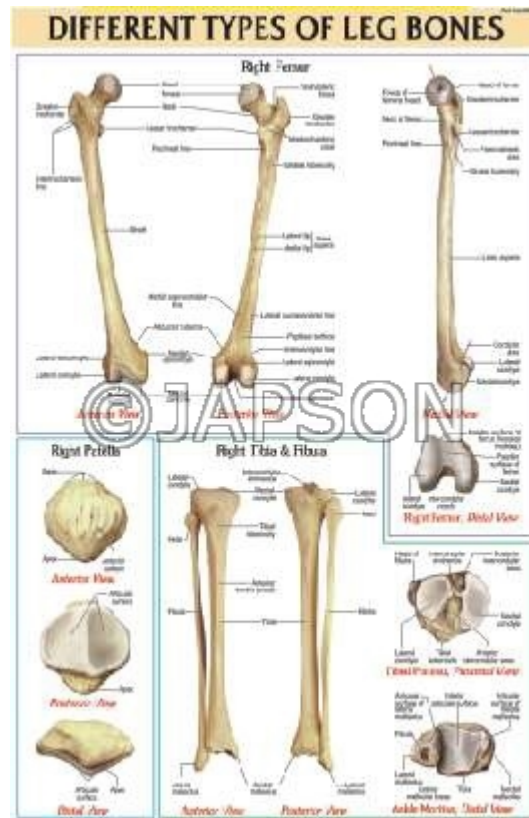
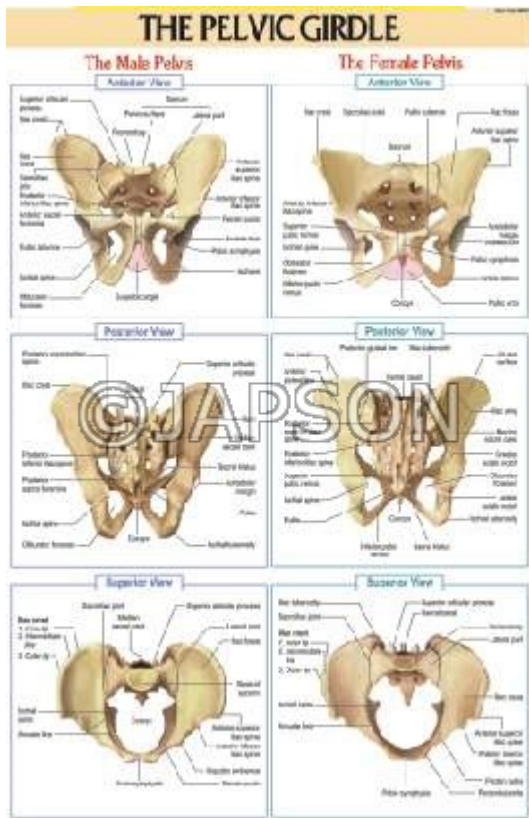
G. Charts, Mammalian Skin - V. S.

H. Charts, Dentition - Teeth Types



I. Charts, The Pelvic Girdle

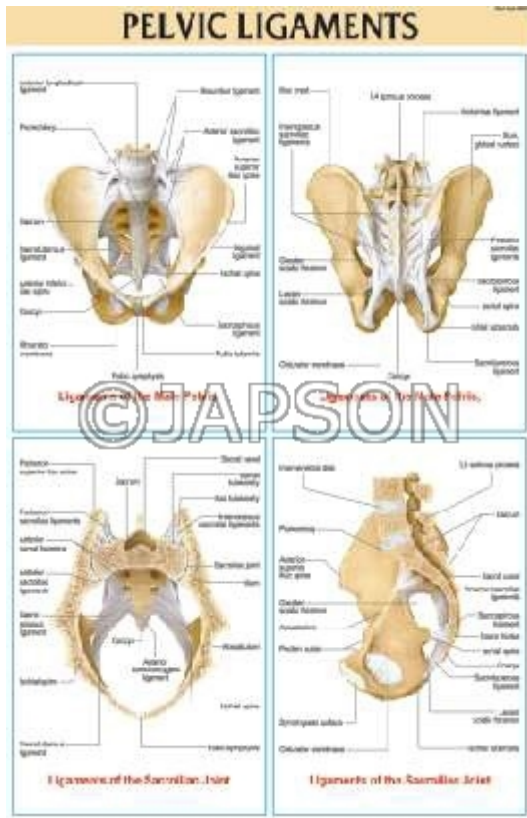
J. Charts, Different Types of Leg Bones



K. Charts, Pelvic Ligaments

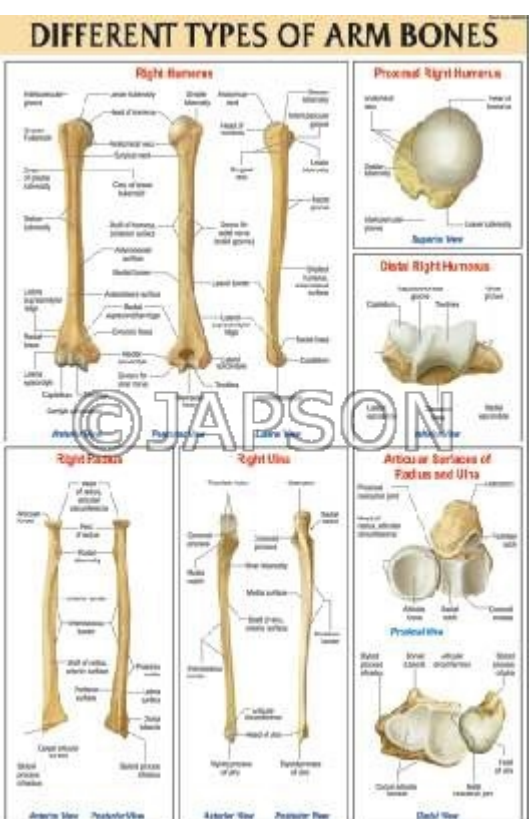
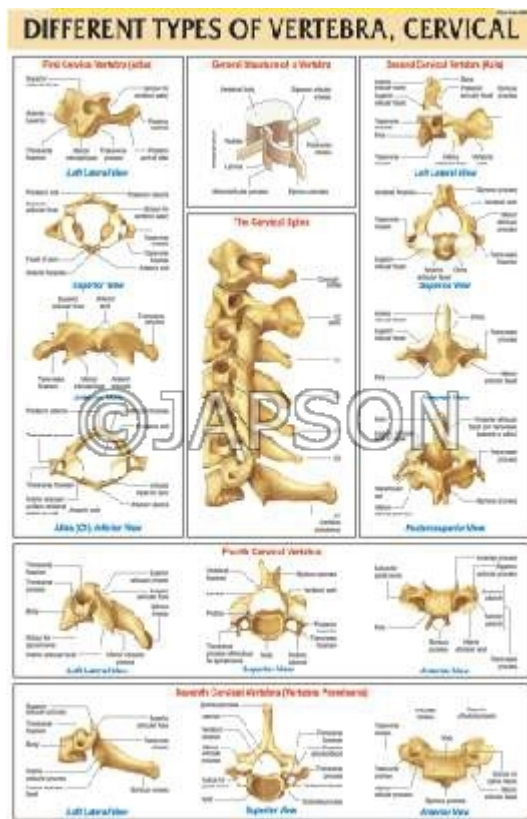
L. Charts, Different Types of

Vertebra, Thoracic



M. Charts, Different Types of
Vertebra, Cervical

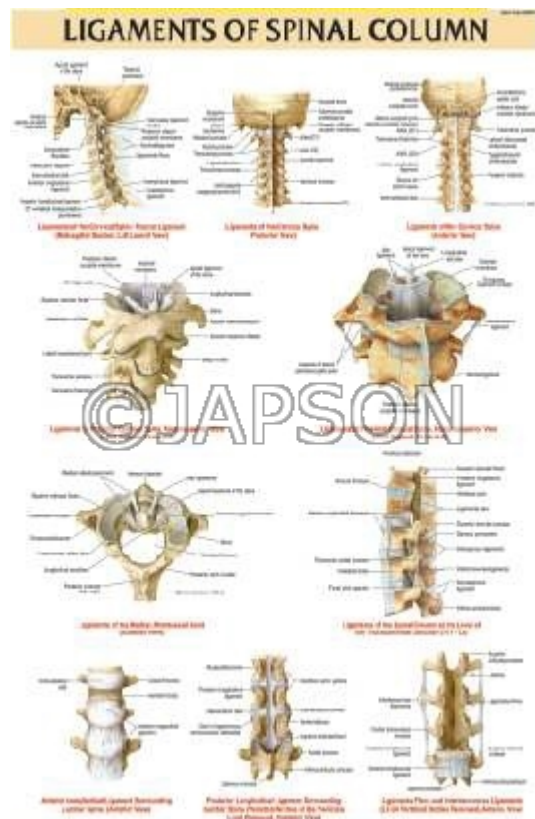
N. Charts, Different Types of Arm
Bones



O. Charts, Ligaments of Lower Limb P. Charts, Ligaments of Upper Limb



Q. Charts, Ligaments of Spinal Column

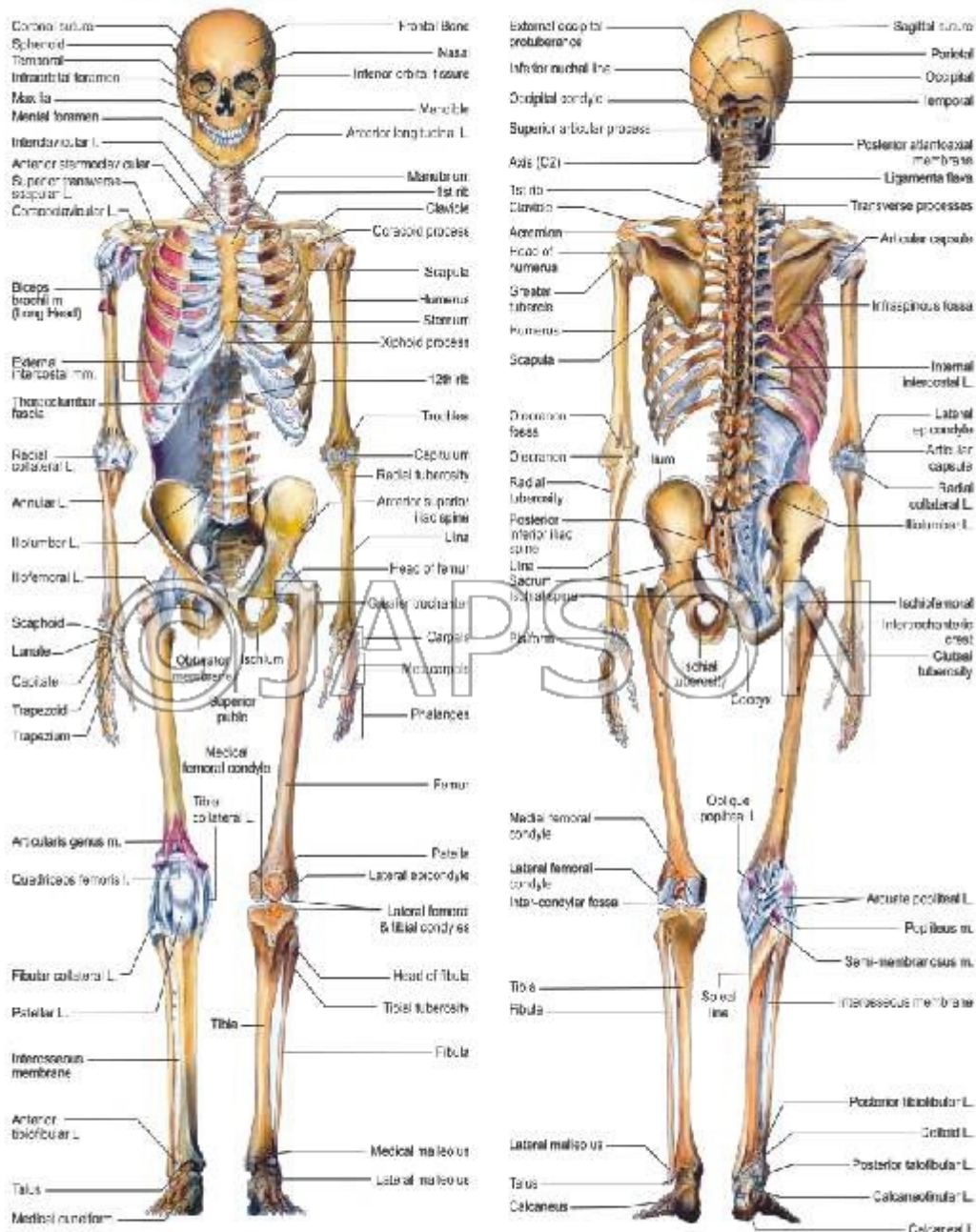


R. Charts, Human Skeleton

HUMAN SKELETON

Anterior View

Posterior View



Skeletal System

Skeleton is a flexible structure of rigid bones which provide shape, movement and support to the body and offer protection to the internal organs. The rigid bones lie buried within the muscles and other soft tissues. Movement is only possible because of the way bones are joined to one another in joints and the way muscles are attached to those bones. On an average there are 206 bones of various shapes and sizes in an adult human skeleton.

Disclaimer

The Products details given on this page are indicative in nature and JAPSON reserves the right to change them without prior notice. Buyer is also requested to re-check the specifications and other features of product at the time of order as product development is a continuous process and minor modifications may

be made to design based on latest availability, process and design.