



Address:
JAMBU PERSHAD & SONS
6275/22 Nicholson Road,
Ambala Cantt, Haryana,
INDIA
Pin: 133001

Email:
sales@japson.com
japsonambala@yahoo.com

Website:
www.japson.com
Phone:
+91-171-4006897

Animal Charts, Zoology, School Education

Product Image



Description

Standard Size: 58x90 cms

Language: English

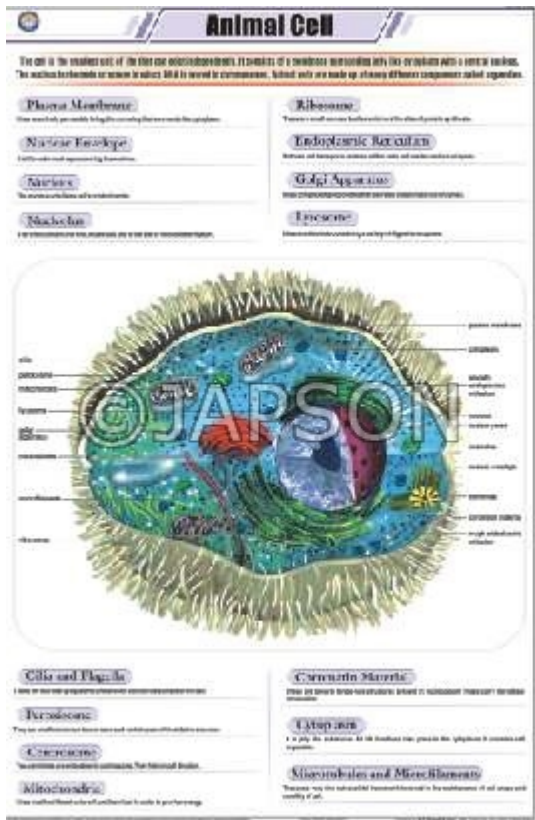
Laminated Paper Charts with Plastic Rollers. These Charts have technically accurate and detailed description in vivid colours.

Note: Based on minimum order quantity conditions, Charts can be customized to your requirements in terms of CONTENT, LANGUAGE, SIZE, etc. Please write back to us for discussion.

A. Charts, Animal Kingdom



B. Charts, Animal Cell



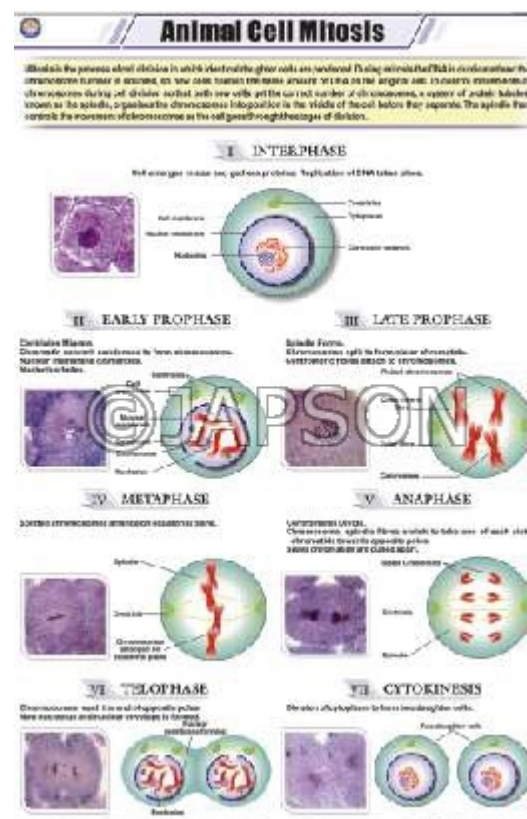
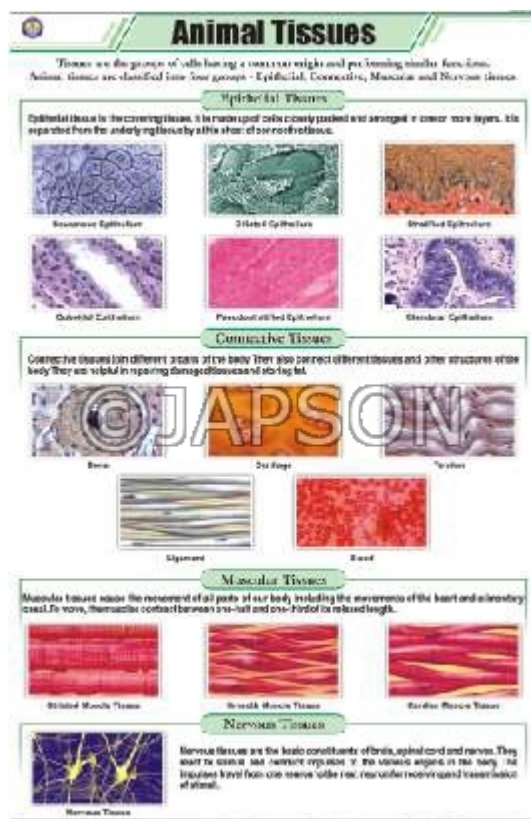
C. Charts, Animal Cell Organelles

D. Charts, Animal Cell Meiosis

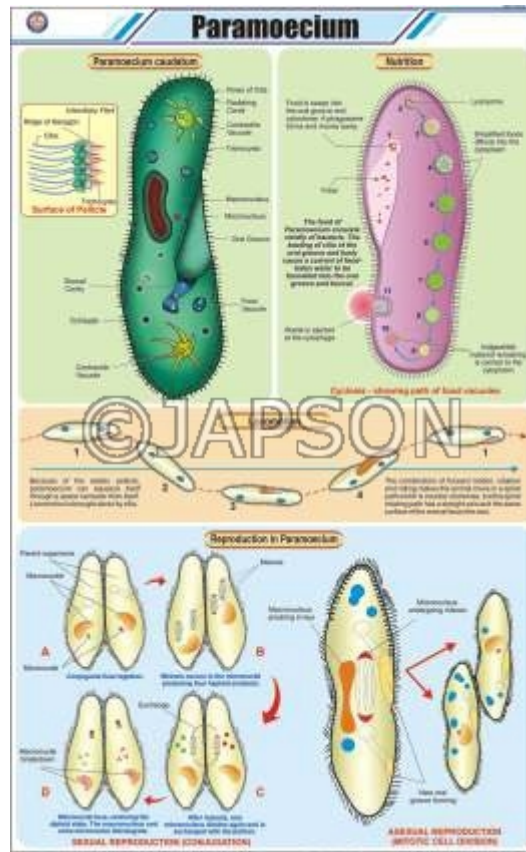
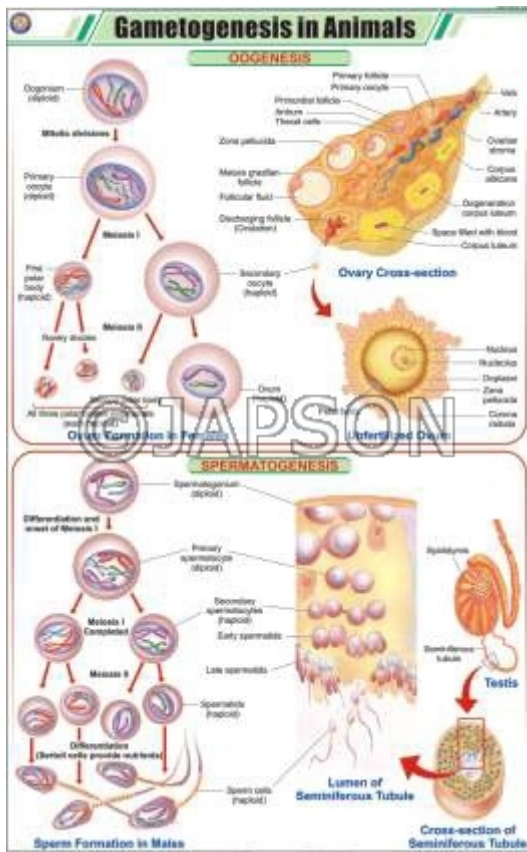


E. Charts, Animal Tissues

F. Charts, Animal Cell Mitosis

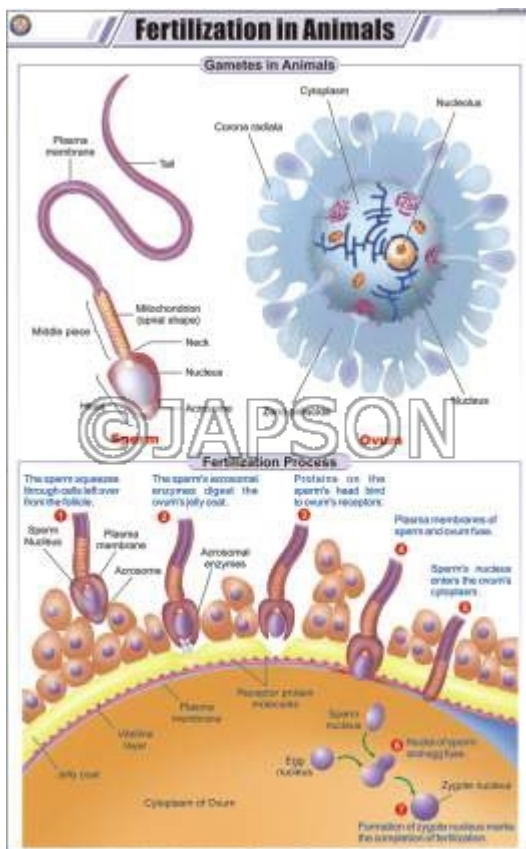


G.Charts, Gametogenesis in Animals H. Charts, Paramoecium



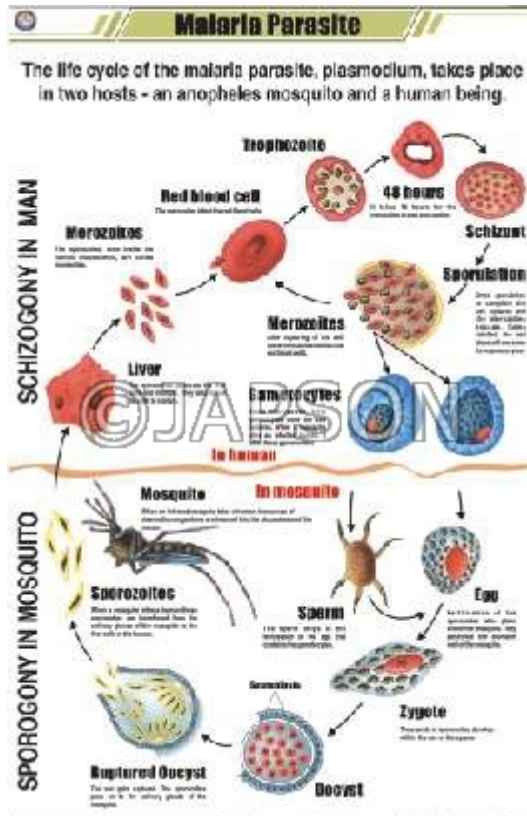
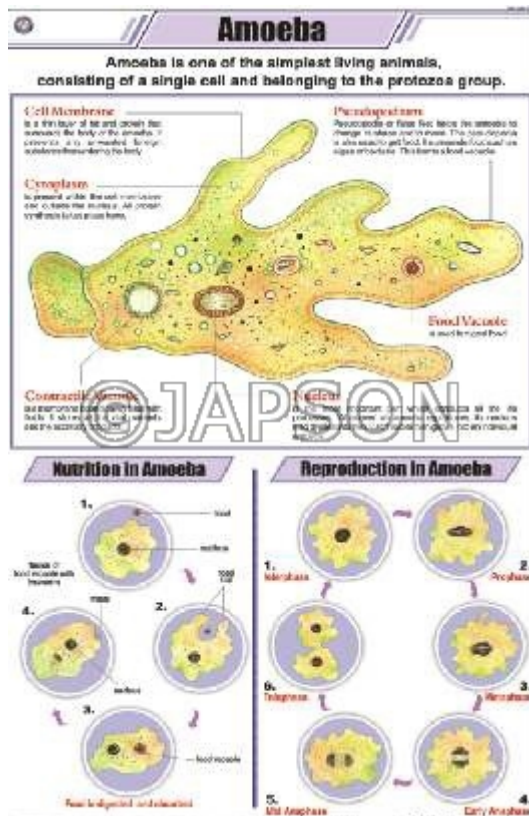
I. Charts, Fertilization in Animals

J. Charts, Protozoa



K. Charts, Amoeba

L. Charts, Malaria Parasite



Disclaimer

The Products details given on this page are indicative in nature and JAPSON reserves the right to change them without prior notice. Buyer is also requested to re-check the specifications and other features of product at the time of order as product development is a continuous process and minor modifications may be made to design based on latest availability, process and design.